

Panasonic
BUSINESS

Document Scanner
KV-S1058Y
KV-S1028Y

Shareable Scanner with Built-in Network



High-Speed Scanning

70 ppm / 140 ipm (KV-S1058Y)
45 ppm / 90 ipm (KV-S1028Y)

* A4, Portrait, 300 dpi, Binary/Colour



**Space and Cost Saving with
Network Connectivity**

**Easy Scanning with
a Simple Operation**

**High Work Efficiency with
High Speed ADF Scanning**

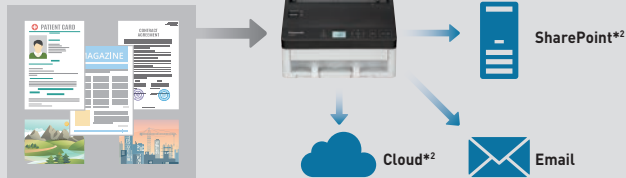


Space and Cost Saving with Network Connectivity

With just one Scanner with Built-in Network, you can share scanning with other people. This can save you office space and operation cost.



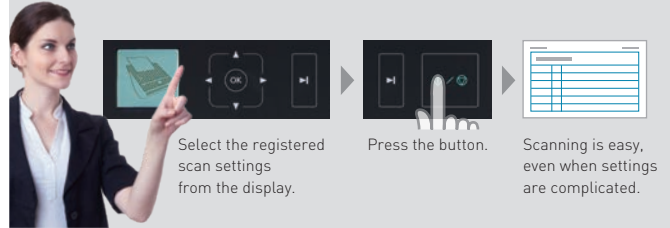
Register scanning conditions in advance, then send scanned documents directly from the scanner to an FTP server, an SMB folder, or email without using a PC*1.



*1 There are restrictions on scanning functions and file formats when scanning without PC.
*2 It is necessary to connect the scanner with the PC used to pre-register a job in Image Capture Plus, a Panasonic original software.

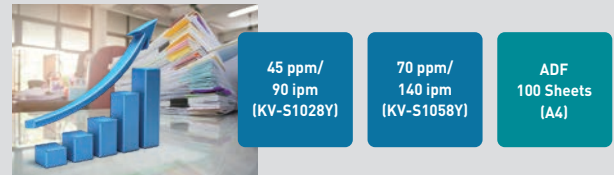
Easy Scanning with a Simple Operation

Single-touch operation is possible with pre-setting of fixed jobs. This makes future scanning operation fast and simple.



High Work Efficiency with High Speed ADF Scanning

You can boost your work efficiency with 100-sheet ADF capacity and high speed scanning.



Specifications

Scanning Face	Duplex
Scanning Method	1 line colour CIS (300 dpi/600 dpi)
Scanning Resolution*1	100 dpi - 600 dpi (1 dpi step) and 1,200 dpi (interpolated) Optical: 300/600 dpi (Automatic switch)
Scanning Speed*2	KV-S1058Y
A4/Portrait	Simplex: 70 ppm, Duplex: 140 ipm
Binary/Colour	KV-S1028Y
(200 dpi, 300 dpi)	Simplex: 45 ppm, Duplex: 90 ipm
Double-Feed Detection	Ultrasonic (The length of documents that can be detected is 70 mm or more.)
Image Compression	MH, MMR, JPEG, JPEG2000
Binary Mode Halftone	Dither, Error Diffusion
ADF Document	Size
	Manual feeding: 48 mm x 54 mm - 216 mm x unlimited (1.9 in. x 2.1 in. - 8.5 in. x unlimited) *3 Automatic feeding: 48 mm x 54 mm - 216 mm x 356 mm (1.9 in. x 2.1 in. - 8.5 in. x 14 in.)
	Thickness
	Paper: 0.04 mm - 0.5 mm (1.6 mils - 19.7 mils) Passport*4: 4 mm (157.5 mils) or less (including carrier sheet) ISO format card: 0.76 mm (0.03 in.) Embossed card up to 1.4 mm (0.055 in.) Note: 1 mil = 0.001 in.
	Weight
	20 g/m ² - 413 g/m ² (5 lb. - 110 lb.)
Feed Tray Capacity	100 sheets (80 g/m ² [21 lb.] High-quality woodfree paper)*5
Supported Operating System	Windows Vista® SP2 (32 bit/64 bit) Windows® 7 (32 bit/64 bit), Windows 8 (32 bit/64 bit) Windows 8.1 (32 bit/64 bit), Windows 10 (32 bit/64 bit) Windows Server® 2003 SP2 (32 bit/64 bit) Windows Server® 2003 R2 SP2 (32 bit/64 bit) Windows Server® 2008 SP2 (32 bit/64 bit) Windows Server® 2008 R2 SP1 (64 bit) Windows Server® 2012 (64 bit), Windows Server® 2016 (64 bit) Mac OS X 10.8 - 10.11, macOS 10.12 - 10.14, Red Hat® Enterprise Linux® Desktop 6/7, Ubuntu® 12/14/15/16/17/18/19

- *1 When scanning a document larger than A5 size at high resolutions over 600 dpi, the scanning may fail due to insufficient memory.
*2 The scanning speed differs depending on the host computer, the operating system, the application, the measuring method, the quantity of data in the image, and the paper type. The scanning speed depends on a measuring method of Panasonic. In case of using this unit with a LAN connection, the scanning speed may be slower due to network traffic.
*3 Using "Long Paper", you can scan long documents by splitting them into smaller parts.
*4 Use the carrier sheet (KV-SS077) to scan passport. Depending on the condition (operating environment, dirt, scratches, etc.) of the carrier sheet or passport, the image processing function may not work properly. Scan beforehand to confirm the scanned image.
*5 Less than 100 mm (3.9 in.) length paper or legal size: 75 sheets
*6 The power requirement differs depending on the country/area.
*7 If connected to a network device (hub, router, etc.) that supports IEEE802.3az.
*8 When being used on more than 2 PCs, OCR function is optional.

Recommended Web Browser	Internet Explorer 11, Mozilla Firefox (latest version), Google Chrome (latest version)
Interface	USB 3.1 Gen1 (backward compatible), LAN (10Base-T/100Base-TX/1000Base-T)
External Dimensions (W X D X H)	300 mm x 272 mm x 238 mm (11.8 in. x 10.7 in. x 9.4 in.)
Weight	4 kg (8.8 lb.)
Power Requirement*6	AC 100 - 127 V, 50/60 Hz, 0.8 A AC 220 - 240 V, 50/60 Hz, 0.4 A
Power Consumption	Maximum (Scanning) 36 W or less Minimum (Ready) 8 W or less Sleep 2 W or less (USB connection), 2 W or less (LAN Connection)*7 Power Off AC 100 - 127 V: 0.3 W or less, AC 220 - 240 V: 0.5 W or less
Operating Environment	Temperature: 5 °C - 35 °C (41 °F - 95 °F), Humidity: 20 % - 80 % RH
Storage Environment	Temperature: -10 °C - 50 °C (14 °F - 122 °F), Humidity: 8 % - 75 % RH
Accessories	CD-ROM: Device driver, ISIS driver software, TWAIN driver software, WIA driver software, User utility, Scan Button Setting Tool, Image Capture Plus, Operating Manual, Control sheet Quick Installation Guide, Power cord, 1.5 m USB cable (USB 3.1), Mixed batch card guide
Options	Options Flatbed Scanner: KV-SS081, Roller exchange kit: KV-SS061, Roller cleaning paper: KV-SS03, Carrier sheet: KV-SS077, Image Capture Plus Add-in 1-license option: KV-SS092*8, Image Capture Plus Add-in 10-license package option: KV-SS093*8

Trademarks and registered trademarks

- ISIS is a registered trademark or trademark of Open Text Corporation.
- Windows, Windows Vista, Windows Server and Internet Explorer are either registered trademarks or trademarks of Microsoft Corporation in the United States and/or other countries.
- Mac, OS X and macOS are trademarks of Apple Inc., registered in the U.S. and other countries.
- Linux is a registered trademark or a trademark of Linus Torvalds in the United States and other countries.
- Red Hat and Red Hat Enterprise Linux are registered trademarks or trademarks of Red Hat, Inc. in the United States and other countries.
- Ubuntu is a registered trademark or a trademark of Canonical Ltd. in the United States and other countries.
- Mozilla and Firefox are registered trademarks of the Mozilla Foundation.
- Google and Google Chrome are trademarks or registered trademarks of Google, Inc.
- All other brand or product names are the property of their respective holders.

This product is designed to reduce hazardous chemical substances in accordance with the RoHS directive.

- All photographs in this brochure are simulated.
- Weights and dimensions are approximate.
- Specifications are subject to change without notice.
- These products may be subject to export control regulations.



DISTRIBUTED BY:

Panasonic

Document Scanner: <https://panasonic.net/cns/office/products/scanner/>

Printed in Japan MG-SCNL033EN 1910NSP/ZZZ-U5